



Feigete Intelligent Technology Co.,Limited

ADD: 2th Floor,Building No.51,Bantian No.3 Industrial Area,Longgang District,Shenzhen,China

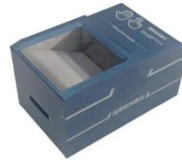
TEL:86-755-82338710

website: www.smartfeigete.com

Specification Sheet

Model No.:
SF-B880

Palm Print Scanner



Product Overview

SFB880 is equipped with an ultra-high resolution palm print scanner, which is sturdy, durable, and cost-effective. The high-definition optical system can capture high-quality flat palm print and flat, rolling ten finger images and features that comply with ISO 19794-2/ANSI-378 and GA/T 864-2010 image standards. It can meet the needs of large-scale national and city level fingerprint collection, providing important technical support and reliable guarantee for large-scale public application systems.

Product features

- ✦ Ultra high image quality: The optical undistorted palmprint imaging system captures images with high fidelity, which is conducive to extraction
- ✦ Powerful collection function: With a large collection window size, it integrates flat palm print, side palm, ten finger flat, and single finger rolling collection into one
- ✦ International certified fingerprint processing algorithm: supports generating and comparing ISO international standard fingerprint features
- ✦ Strong adaptability: Suitable for various types of palm prints and fingerprints, automatically removing residual palm prints and halo effects, resulting in higher imaging quality
- ✦ Durable and earthquake resistant: sturdy appearance, wear-resistant, shockproof, strong resistance to damage, anti-static interference, and long service life
- ✦ Simple secondary development: Provides SDK development packages for Windows and Android platforms

Electrical parameters

Supply Voltage 5.0V±5% USB provided

Operating Current Typical <500mA

ESD Contact: ±8KV; Air: ±15KV

connector USB 2.0

Environmental parameters

Operating temperature 40°C-70°C

Storage temperature 40°C-60°C

Operating humidity <90% R.H (non-condensing)

Storage humidity 20-93% R.H

Image parameter

Image Resolution 500 DPI

Capture window size 150 * 150mm

Effective image size

Half palm(FBI) ≥ 139.7mm×139.7mm;
Half palm (GA) = 117mm×117mm;
Lateral palm (FBI) ≥ 44.5mm×101.6mm
Lateral palm (GA) = 52mm×100mm;
Four Fingers ≥ 81.2mm×76.2mm;
Single Finger ≥ 32.5mm×32.5mm;
Rolling Finger(FBI) ≥ 40.64mm×38.1mm;
Rolling finger (GA) = 32.5mm×32.5mm;
Thumb (FBI) ≥ 25.4mm×50.8mm

Image pixels

Half palm (FBI) ≥ 2750*2750pixels
Half palm (GA) = 2304*2304pixels
Lateral palm (FBI) ≥ 875*2000pixels
Lateral palm (GA) = 1024*1968pixels
Four Fingers ≥ 1600*1500pixels
Single Finger ≥ 640*640 pixels
Rolling finger (FBI) ≥ 800*750 pixels
Rolling finger (GA) = 640*640 pixels
Thumb (FBI) ≥ 500*1000 pixels

Collection time Half palm ≥ 7 Frames/S (≤ 143ms); Lateral palm ≥ 7 Frames/S (≤ 143ms)
Single Finger ≥ 25 Frames/S (≤ 66ms) Four Fingers ≥ 10 Frames/S (≤ 100ms)

image distortion ≤ 1%

Image background gray unevenness ≤ 10%

grayscale 8-bit, 256 levels

Gray-scale dynamic range ≥ 180 class

Image background gray value 225~255

image defects Within any 600 * 600 area, there should be no more than 10 pixels with a diameter of 2

Image center deviation Deviation between image center and acquisition window center: ≤ 15 pixels in both X and Y directions